



GAT MONTHLY MEMBERSHIP PROGRESS REPORT

Results as of: 2/28/2022

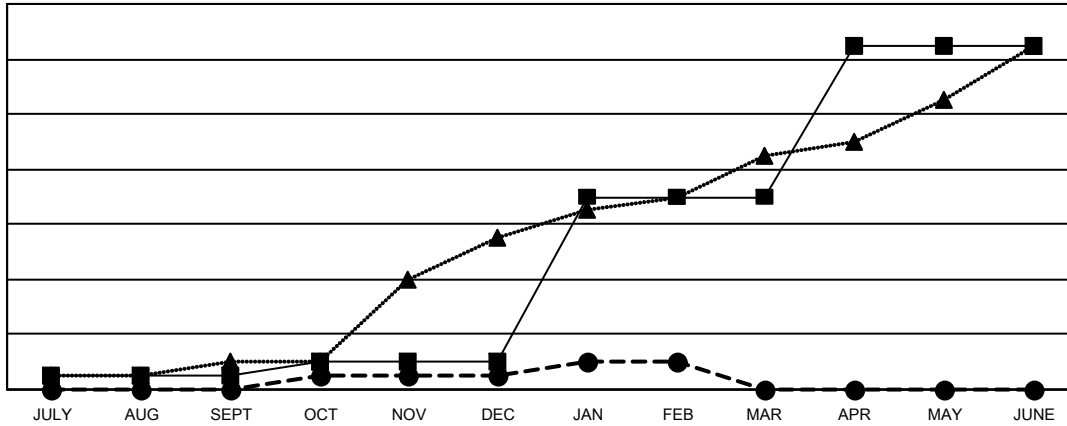
Multiple District 201

LOCATION: AUSTRALIA

Clubs			
RESULTS FOR 2021-2022			
QUARTER	NEW CLUB GOAL	NEW CLUBS	DROPPED CLUBS
JULY/AUG/SEPT	1	0	12
OCT/NOV/DEC	1	1	4
JAN/FEB/MAR	12	1	7
APR/MAY/JUNE	11	0	0

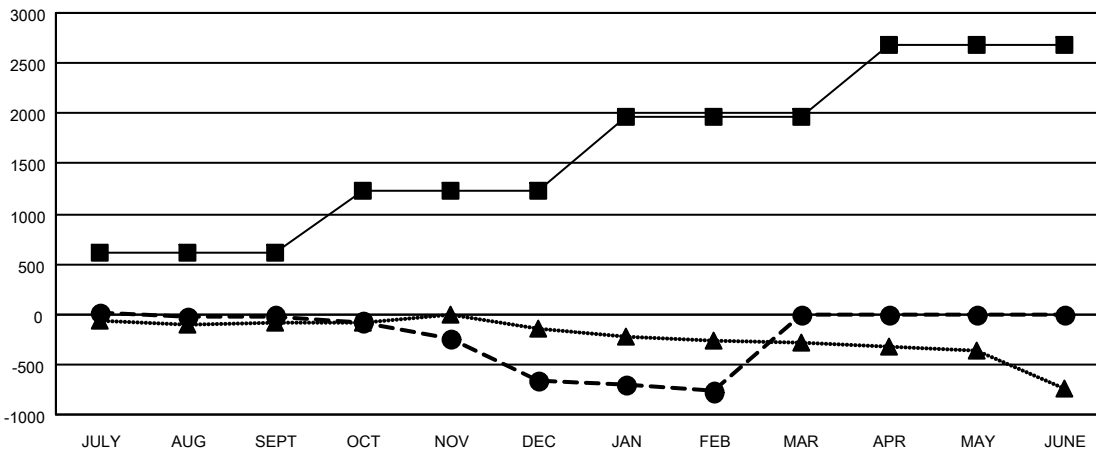
Members			
RESULTS FOR 2021-2022			
QUARTER	MEMBER GROWTH NET GOAL	MEMBER GROWTH ACTUAL	DROPPED MEMBERS ACTUAL (including transfers)
JULY/AUG/SEPT	618	628	548
OCT/NOV/DEC	612	485	1,041
JAN/FEB/MAR	732	342	402
APR/MAY/JUNE	713	0	0

GOALS AND ACTUAL NEW CLUBS CUMULATIVE



- CURRENT YEAR GOALS FOR NEW CLUBS
- CURRENT YEAR ACTUAL NEW CLUBS
- ▲- LAST YEAR ACTUAL NEW CLUBS

GOALS AND ACTUAL MEMBERS CUMULATIVE



- MEMBER GROWTH NET GOAL
- MEMBER GROWTH ACTUAL
- ▲- LAST YEAR MEMBERSHIP ACTUAL

DROPPED CLUBS: 23	544 CLUBS OF 1187 ADDED 1 OR MORE NEW MEMBERS	GENDER DISTRIBUTION
DROPPED MEMBERS	CLICK HERE FOR CUMULATIVE MEMBERSHIP DATA	MALE 14,569 (63.43%)
DECEASED 208		FEMALE 8,398 (36.56%)
CLUB CANCELLED 5		NON BINARY 1 (0.00%)
OTHER 1,778		PREFER NOT TO ANSWER 0 (0.00%)
TOTAL 1,991		TOTAL FAMILY UNIT MEMBERS 3,672
		FAMILY MEMBERS PAYING HALF DUES 1,865